

SupaCut Automatic Tape Dispenser

Operating Instructions

Please read the following instructions carefully before operating your dispenser.

To be used under adult supervision only

Using the Dispenser

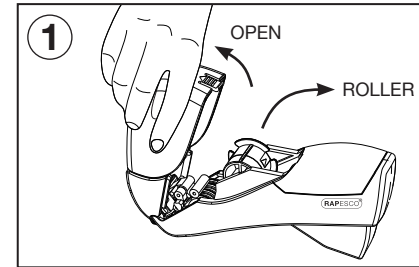
1. Hold the dispenser in one hand.
2. Pressing and releasing the trigger once will generate approximately 35mm of pre-cut tape.
3. For longer lengths of tape squeeze the trigger and pull the dispenser over the required surface, or pull out the tape until the desired length is reached. Release the trigger once you have the length you need.

Tips & Warnings

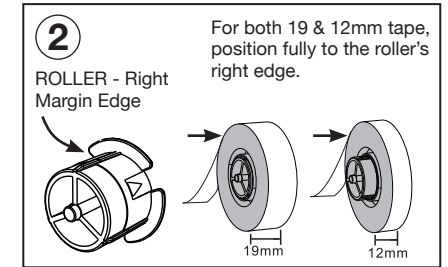
1. For best results squeeze and release the trigger fully, otherwise tape jams may occur.
2. The dispenser is designed to use high quality 12 or 19mm tape widths. With a suitable tape thickness of between 0.05 & 0.07mm.
3. Make sure the front opening of the dispenser is free of tape after each action, otherwise this may cause the dispenser to jam.
4. If tape becomes jammed inside, open the transparent cover, take out the roll of tape and remove any tape residue from the inside of the dispenser. Reload the tape roll. **PLEASE NOTE:** If jammed tape is left clogged and not cleared immediately it may destroy the internal rubber band mechanism.

Dimensions	Weight	Compatible Tape
L 168 x W 38 x H 94mm	135g	12mm x 20m & 19mm x 33m

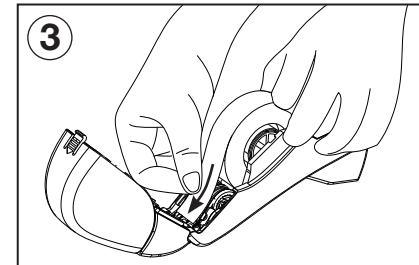
How to Load Tape



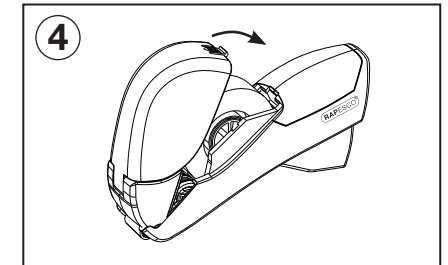
Press "OPEN" at the rear of the transparent cover and take out the roller.



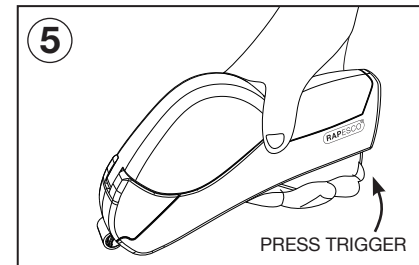
Install the appropriate tape on the roller and place it back into the rail.



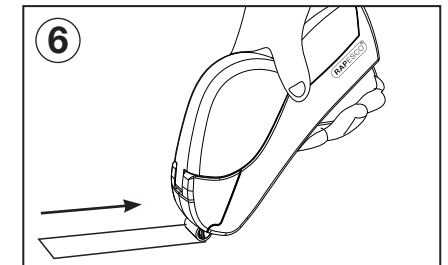
Pull the tape out 30-40mm so that the tip is positioned at the end and the remaining tape rests easily over the row of the rubber bands.



Replace the transparent cover.



Squeeze the trigger to initialise and load the tape into the front opening.



Then just click and release.